

APPLICATION FIELDS

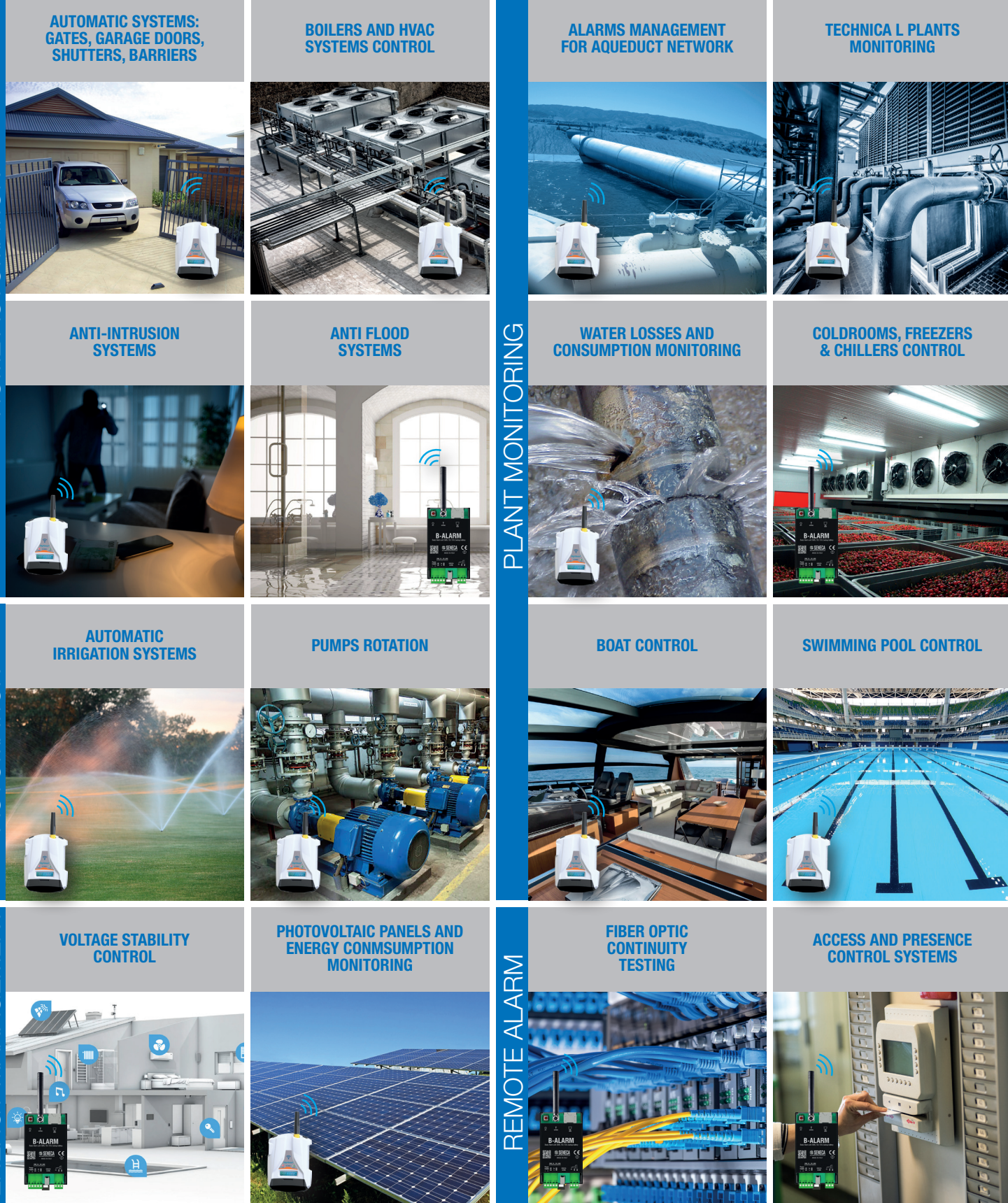
HOME AUTOMATION



PLANT MONITORING

AUTOMATION

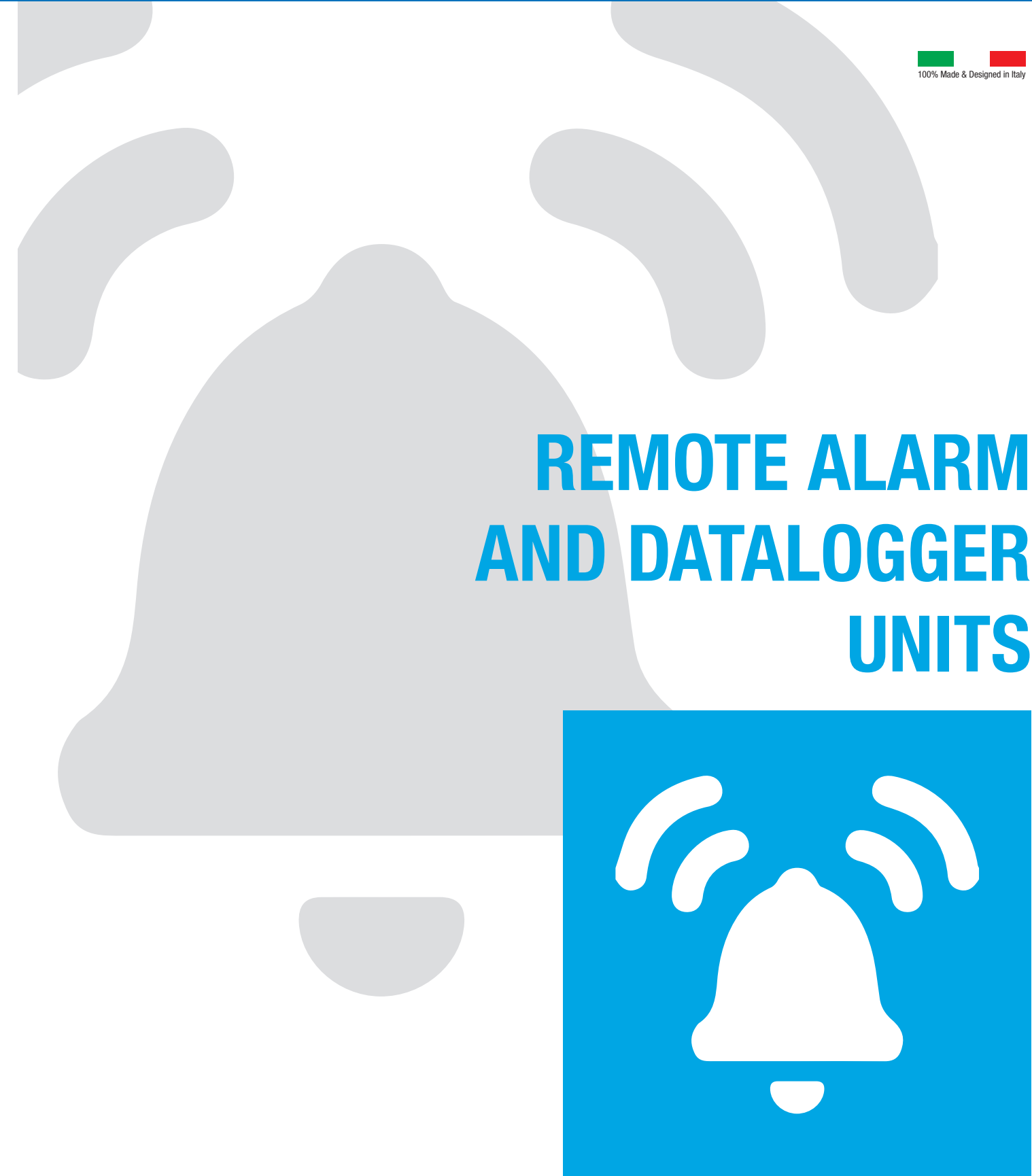
ENERGY MANAGEMENT

REMOTE ALARM



	B-ALARM	MYALARM2
		
	Unità di teleallarme 1DI / 1DO con funzioni di base	Datalogger GSM/GPRS con funzioni di teleallarme, telemisura e telegestione
GENERAL DATA		
Power supply	10 - 30 Vdc	6-15 Vdc
Power consumption	Typical 1.2 W, max 2 W	Max 3.5 W
Protection degree	IP20	IP20
Backup battery	Li-On, lifetime up to 100 min	Li-On (1.000 mAh), lifetime from 8 to 16 h
LED status signal	Power supply - GSM coverage - Input / Output status	Power supply - GSM / GPRS - Device status
Operating temperature	-10...+55°C	-10...+55°C (with battery non charging); 0...+45°C (charging)
Built-in NTC sensor	No	Yes
Connection	Removable screw terminals, pitch 3.5 mm PUSH-PUSH SIM card connector Screw connector for stilo antenna Micro USB port for configuration	Removable spring clamps, pitch 3.5 mm PUSH-PUSH SIM card connector SMA connector for GSM antenna Micro USB port for configuration / Slot push-push for Micro SD card
SD card bundle	No	Yes (MY2S model)
Protocols	SMS	SMS, FTP client, SMTP client, SMTPS with SSL client
Display	No	Graphic LCD 32x128 pixels - Display scroll button - Visible area 29 x 8.6 mm
GSM	Quad band (850 / 900 / 1800 / 1900 MHz)	Quad band 850 / 900 / 1800 / 1900 MHz; SIM push-pull slot, voice/data SIM card support
Dimension	54 x 114 x 32 mm	80 x 105 x 30 mm
Weight	80 g	150 g
Material	ABS	ABS
Mounting	DIN rail or wall mount	DIN rail or wall mount
FUNCTIONS AND SOFTWARE		
Basic configuration	Software (EASY SETUP)	Software (EASY MYALARM2)
Pre-programmed scenarios	No	Software (EASY MYALARM2)
Datalogger	No	Yes
Commands / SMS alarms / Ring tones	Yes	Yes
DTMF commands / Voice alarms	No	Yes (MY2S model)
Incremental alarms	Yes	Yes
Email management	No	Yes
Phonebook	5 users (1 administrator), 250 additional contacts, ringtone	20 users (1 administrator), 250 additional contacts, ringtone
Free ringtone commands	Yes	Yes
Fast / time-based commands	Yes	Yes
Counters and timers management	1 counter, 4 timers	4 counters, 10 timers
SMS and temperature mobile App	No	Yes
Unicode support	Yes	Yes
DIGITAL INPUTS		
Channels	1	4
Type	Reed, contact, NPN 2 wires, photodiode FD01	REED, Contact, PNP, photodiode
Frequency	Max 5 Hz	Max 30 Hz
ANALOG INPUTS		
Channels	-	2
Type	-	Current 0...20 mA (max impedance 60 Ω); voltage 0...30 V (max impedance 100 kΩ); resolution 16 bit, accuracy 0.1% f.s.
DIGITAL OUTPUTS		
Channels	1	2 (option)
Type	SPDT relay 3 A / 250 Vac	SPST relay 3 A / 250 Vac
STANDARD		
Approvals	CE	CE
Norms	ETSI EN 301 489-7, EN301 511, EN301 489-1, IEC / EN 60950	EN 60950, EN 301 511, EN 301 489-7, EN 301 489-1
ORDER CODES		
Code	Description	Code
B-ALARM	Remote alarm unit, 1DI / 1DO, basic functions	Code
MY2B-0-0-M-B	MyALARM2 - GSM/GPRS datalogger, standard version, clamps, blue color	Description
MY2B-0-0-M-G	MyALARM2 - GSM/GPRS datalogger, standard version, clamps, grey color	ACCESSORIES
MY2B-R-0-M-B	MyALARM2 - GSM/GPRS datalogger, standard version, relay, clamps, blue color	A-GSM
MY2B-R-0-M-G	MyALARM2 - GSM/GPRS datalogger, standard version, relay, clamps, grey color	Dual band swing GSM external antenna, cable 3.2 m, SMA
MY2B-0-0-M-B-4X	MyALARM2 - GSM/GPRS datalogger, security audio version, clamps, blue color, IP66 case	A-GSM-DIR-5M
MY2B-0-0-M-G-4X	MyALARM2 - GSM/GPRS datalogger, standard version, clamps, grey color, IP66 case	GSM-DECT-UMTS directive compact antenna
MY2B-R-0-M-B-4X	MyALARM2 - GSM/GPRS datalogger, standard version, relay, clamps, blue color, IP66 case	A-GSM-OMNIDIR
MY2B-R-0-M-G-4X	MyALARM2 - GSM/GPRS datalogger, standard version, relay, clamps, grey color, IP66 case	GSM-UMTS-WIFI Omnidirectional Antenna
MY2S-0-0-M-B	MyALARM2 - GSM/GPRS datalogger, security audio version, clamps, blue color	A-GSM-OMNIDIR-10
MY2S-0-0-M-G	MyALARM2 - GSM/GPRS datalogger, security audio version, clamps, grey color	GSM-UMTS-WIFI Omnidirectional Antenna, L=10 m
MY2S-R-0-M-B	MyALARM2 - GSM/GPRS datalogger, security audio version, relay, clamps, blue color	A-GSM-QUAD-N
MY2S-R-0-M-G	MyALARM2 - GSM/GPRS datalogger, security audio version, relay, clamps, grey color	4G/WIFI omnidirectional antenna, FME, L=3mt
MY2S-0-0-M-B-4X	MyALARM2 - GSM/GPRS datalogger, security audio version, relay, clamps, blue color, IP66 case	ALIM-MY2
MY2S-0-0-M-G-4X	MyALARM2 - GSM/GPRS datalogger, security audio version, relay, clamps, grey color, IP66 case	Power Supply Unit for MYALARM2
		BATT-MY2
		Lithium Polymer (LiPo) Battery Pack 3.7V - 1200mAh for MYALARM2
		FD01
		Pulsecap for Energy counter measurement, max freq. 10 Hz
		MSD
		Micro SD memory card with adapter
		MY2-KITIP66
		IP66 ABS kit enclosure for field application
		SOFTWARE AND APP
		EASY MYALARM2
		MYALARM2 configurator
		EASY SETUP
		SENECA programmable products configurator
		LOG FACTORY
		Data acquisition and visualization software
		SENECA SMS
		iOS / Android app for MYALARM2 remote setting and commands
		SENECA TEMP
		iOS app for MYALARM2 temperature control

1900129242 - Publication PADUL_03 SEN - March 2019



REMOTE ALARM AND DATALOGGER UNITS

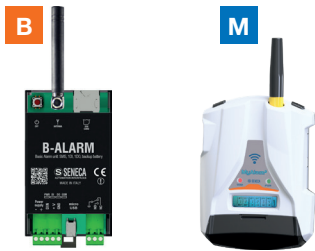


SENECA Indirizzo sede legale e operativa:
Via Austria, 26 - 35127 Padova (I)
T. +39 049 8705.359 - F. +39 049 8706.287
info@seneca.it - www.seneca.it

The material in this document is for information only and is subject to change without notice. While reasonable efforts have been made in the preparation of this document to assure its accuracy, SENECA assumes no liability resulting from errors or omissions, or from the use of the information contained herein.

SENECA
www.seneca.it

REMOTE ALARM AND DATALOGGER UNITS



SENECA remote alarm and datalogging devices are designed to remotely control, monitor and implement small automations for homes, buildings, plants, manufacturing machines through simple commands sent with SMS messages. With any mobile device or smartphone, it is possible to control the on/off switching of a technical installation, to activate a contact, to receive a warning or an alarm. These professional and universal devices are easily programmable and are based on a GSM / GPRS module that operates as a smart phone communicator able of managing calls, commands, directories and data storage.

HIGHLIGHTS

INSTANT ALARM MESSAGING B M	UNICODE MULTILANGUAGE SUPPORT B M	BUILT-IN MODEM AND I/O'S B M	SMS COMMANDS, FREE RING TONES B M
PHONE BOOK UP TO 250 USERS B M	LI-ON RECHARGEABLE BATTERY B M	COMPATIBLE STANDARD SIM CARD B M	COUNTERS AND TIMERS MANAGEMENT B M
DATA STORAGE AND VISUALIZATION M	BUILT-IN TEMPERATURE SENSOR M	E-MAIL MANAGEMENT M	PRE-PROGRAMMED SCENARIOS M
DTMF COMMAND, VOICE ALARM (10 HOURLY PROGRAMS, 83 ALARM SOURCES) M	DIGITAL OUTPUT (OPTION) M	IP66 CASE (OPTION) M	MICRO SD BUNDLE (MY2S MODEL) M

PROGRAMMING TOOLS



- M EASY MYALARM2 / EASY SETUP (BASIC CONFIGURATION)**
I/O settings, sample time, log, commands, alarms, SIM, GSM communication, audio files, administration functions (password, credit, redirect redirect etc.)
- B EASY MYALARM2 (WITH SCENARIOS)**
Pre-programmed custom applications: advanced automation, datalogger, photovoltaic panels control, automatic gate control, hour meter, power supply blackout control, alarm control on analog/digital inputs, water/gas losses, swimming pool control, timing automation, boiler control
- M LOG FACTORY**
Storage and visualization log files
- M SENECA SMS**
Android / iOS APP for sending and custom SMS commands
- M SENECA TEMP**
Android APP for temperature management and thermostat function
- M SMS COMMANDS OR RING TONES**
B

B B-ALARM COMPACT REMOTE ALARM UNIT

ON-OFF BUTTON

SMA ANTENNA CONNECTOR

Nr.1 push pull slot
For mini SIM card

Wall mount or DIN rail (CEI EN 60715)

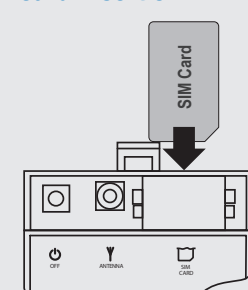
LED status indicators

Power supply 10..28 Vdc
Max power consumption 3,5 W
Internal NimH battery 600 mAh

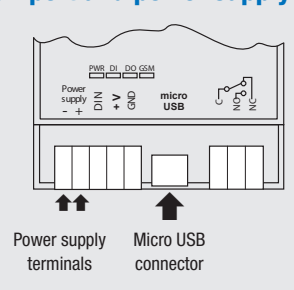
Nr.1 Digital Input
Reed, contact, NPN/PNP 2 wires, FD01 5Hz

Micro USB
For upgrade and configuration

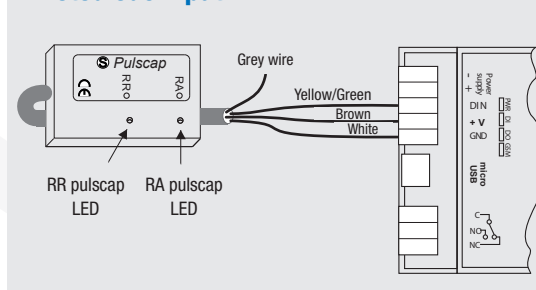
SIM card insertion



USB port and power supply



Photodiode input



M MYALARM2 A CONCENTRATE OF TECHNOLOGY

GSM/GPRS communication

GSM/GPRS Quadband built-in modem 850/900/1800/1900 MHz; communication via SMS, email, Ftp and Cloud

On-off button

Fast programming mini USB interface

LCD visualization

LCD display 128x23 pixel for I/O status visualization, totalizers/counters, GSM, data

Data Acquisition

#4 Digital Inputs: Max freq. 30Hz @32bits (10 times, 4 counters, 4 totalizers, 4 hourmeters)
#2 Analog Inputs: range 0-20 mA, 0-30 V, resolution @16bits
#2 Digital Outputs: SPST relay 3A (option)

Compact dimension

MyALARM2: 80 x 105 x 30 mm
IP66 ext. case (MY2-KITIP66): 130 x 180 x 75 mm

Data / Voice SIM port

Porta SIM Dati/Voce

Built-in / expandable memories

SD slot for micro SD and micro SDHC up to 32 GB
Built-in flash memory

Rechargeable backup battery

LiOn, 1.000 mAh, max lifetime 16 h

Power supply @12V

NTC sensor

Cabled on terminal

ACCESSORIES

A-GSM Dual band GSM external antenna, cable 3.2 m, SMA	A-GSM-DIR- 5M GSM-DECTUMTS directive compact antenna	A-GSM-OMNIDIR GSM-LIMITS-WIFI Omnidirectional Antenna	A-GSM-QUAD-N GSM/3G/4G/LTE high-performance omnidirectional antenna	A-GPS External GPS antenna - magnetic mount	FD01 Photodetector for pulse counting	MY2-KITIP66 IP66 ABS kit enclosure for field application	NTC-150 External NTC probe (1,5 m)
--	--	---	---	---	---	--	--